



Flanders
State of the Art

MAPPING AND MANAGING PARKING USE AND VISITOR FLOWS VIA SMART CAMERAS

Bart Neuts (Visit Flanders, KU Leuven)

PILOT PROJECT: NATIONAAL PARK HOGE KEMPEN

Objective of pilot project:

Monitoring:

- 1) Live monitoring of access gates: Measuring vehicle and human access at entrance areas at peak moments in order to:
 - prevent too many visitors at singular starting locations
 - Steer visitors through communication channels
- 2) Passive visitor numbers: Building knowledge on visitor numbers on main trails on daily basis and year-round

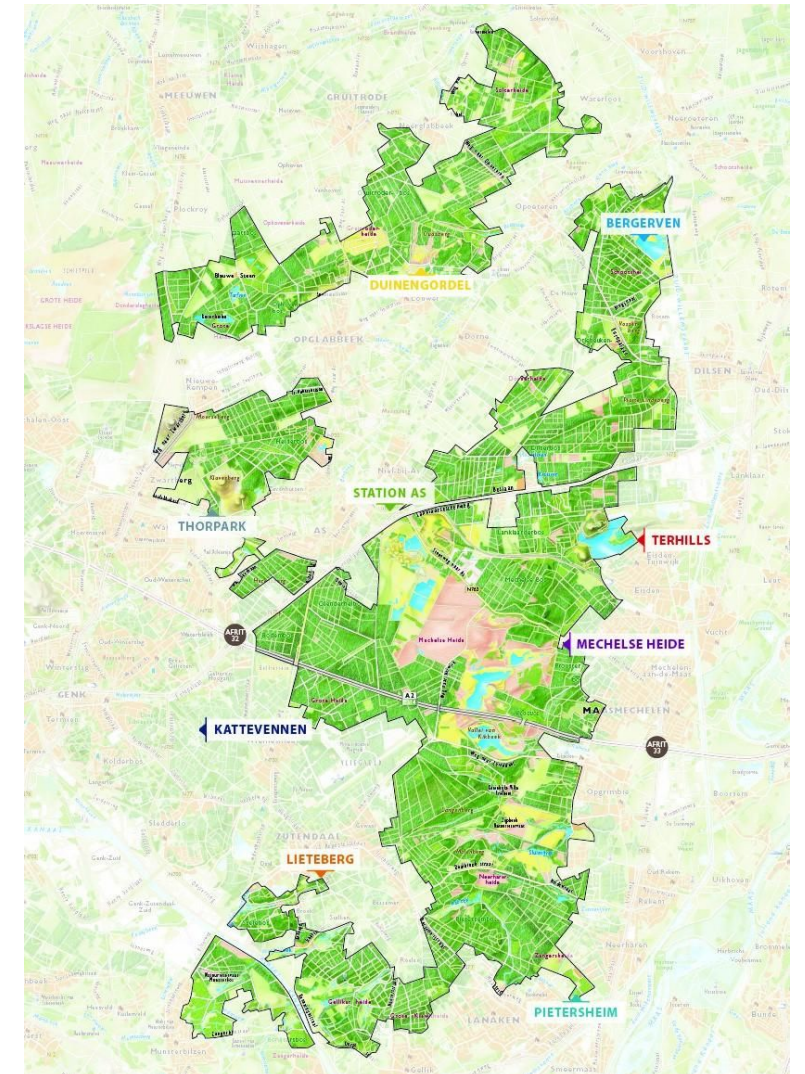
Understanding:

- 1) Surveys with visitors: Insights into profile, expectations, experiences, mobility, ..., via:
 - Face-to-face interviews
 - Analysis of online reviews
- 2) Visitor impacts: Studying capacity limits of different areas to prevent negative impacts on environment and visitor experiences

LIVE MONITORING AT 2 ENTRANCES: MECHELSE HEIDE & TERHILLS

Cameras installed to:

- Count vehicles on parking (1 counter per parking)
- Count visitor types (cyclists + pedestrians) at entrance (1 counter per entrance)



PASSIVE MONITORING OF VISITOR NUMBERS ON TRAILS

Traditional counters at strategic locations:

- Counting passers-by on top trails while also providing profile (hiker, mountainbike etc.)
- Automatic data transmission every 24h □ use numbers can be calculated on daily basis, not live

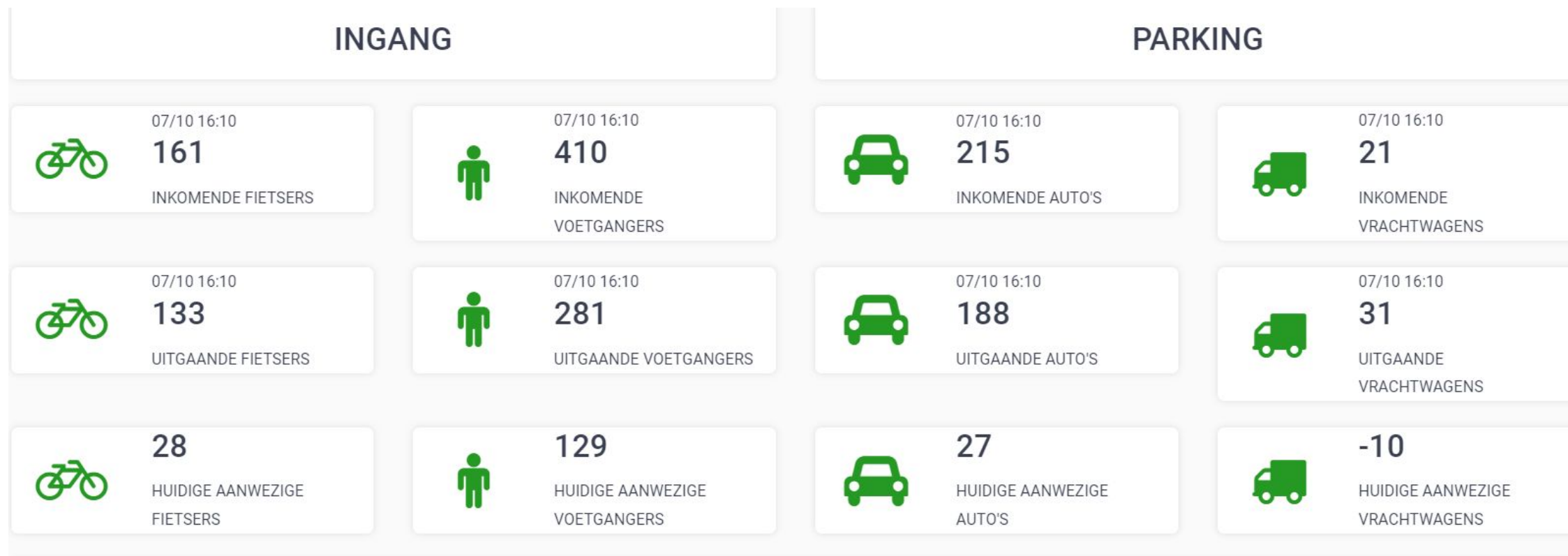


DATA INTEGRATION AND ENRICHMENT IN DASHBOARD

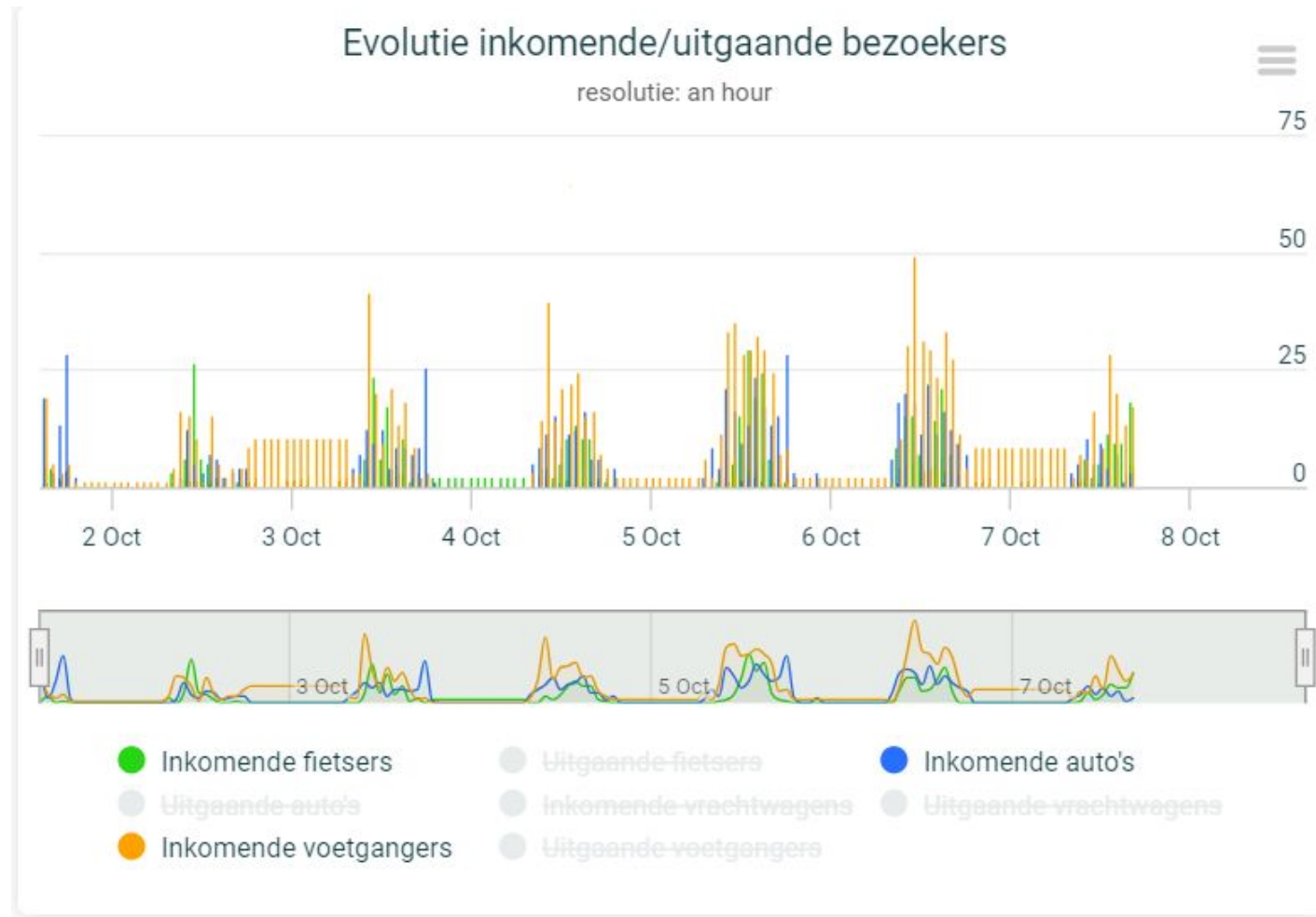
Dashboard to centralize data from different counters

- Overlaying dashboard is programmed to visualize data from both live monitoring counters and passive monitoring tools
- Qualitative surveys help to identify threshold levels and proactively manage visitor flows
- Inclusion of additional weather data + opportunity for further open data enrichment

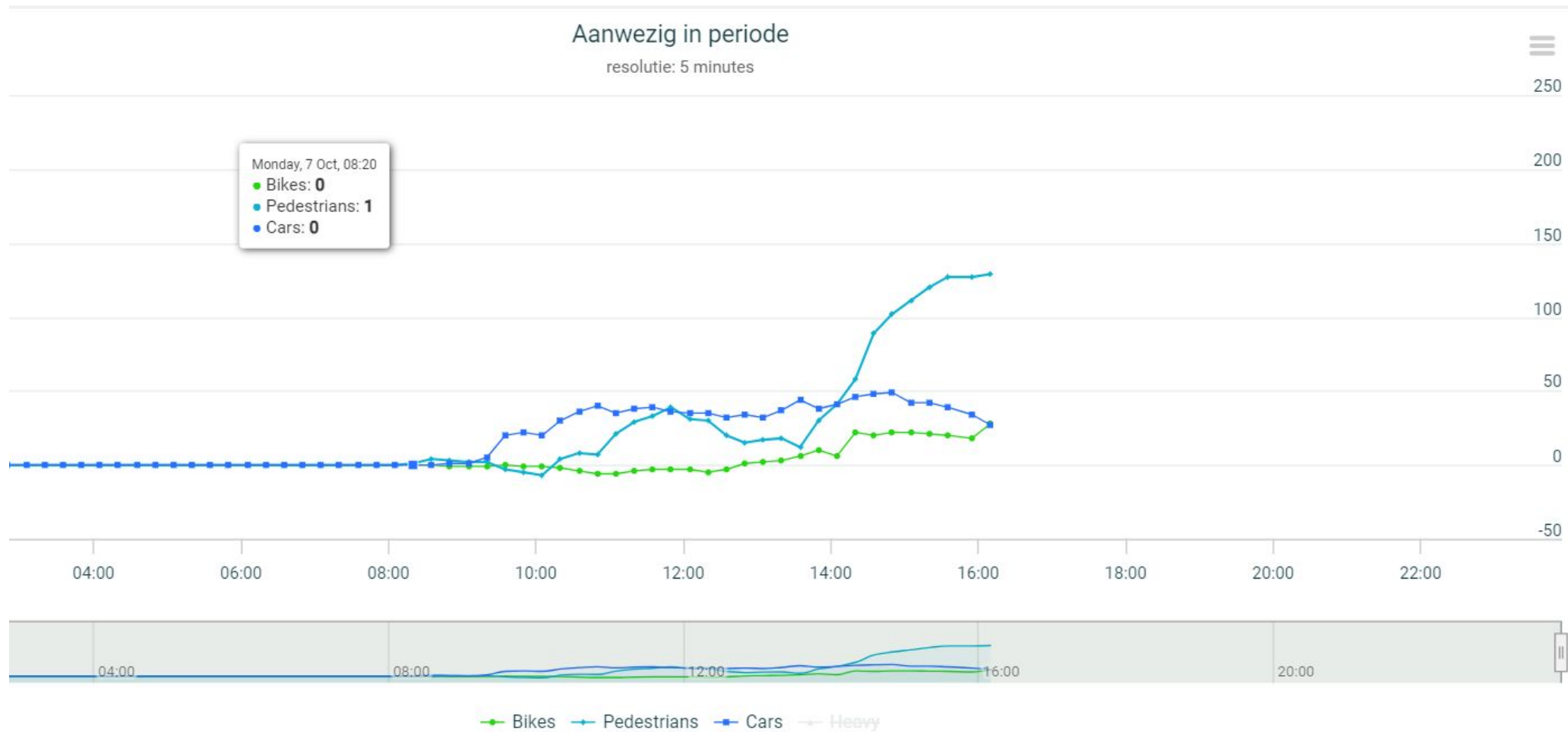
DASHBOARD EXAMPLE (1)



DASHBOARD EXAMPLE (2)



DASHBOARD EXAMPLE (3)





Flanders
State of the Art

ADDITIONAL QUESTIONS?

bart.neuts@toerismevlaanderen.be