



Parc
naturel
régional
de la Montagne
de Reims



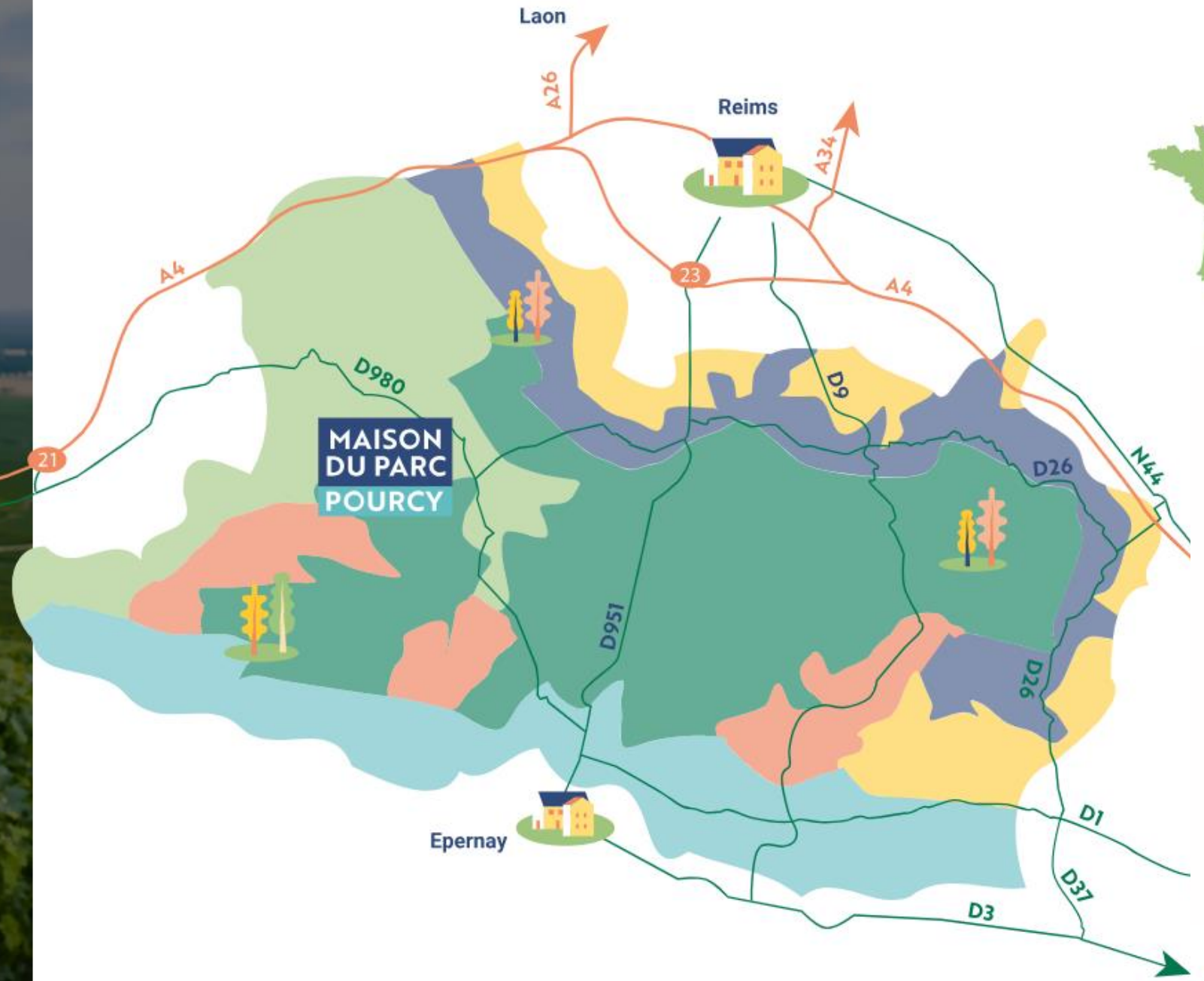
MONTAGNE DE REIMS REGIONAL PARK

&

LABEL « FORÊT D'EXCEPTION® »

MONTAGNE DE REIMS





ANNE DESVERONNIÈRES

VICE-PRESIDENT
**OF MONTAGNE DE REIMS
NATURE PARK (PNRMR)**

PRESIDENT
**OF THE FORÊT
D'EXCEPTION® LOCAL
STEERING COMMITTEE**



Châlons-en-Champagne

Forest massif in Montagne de Reims regional Park

The idea of creating a “regional park” in Montagne de Reims was initially the idea of 3 municipalities strongly linked to the forest (in 1976)

The forest massif represents 40% of Montagne de Reims regional Park territory (20 000 hectares)

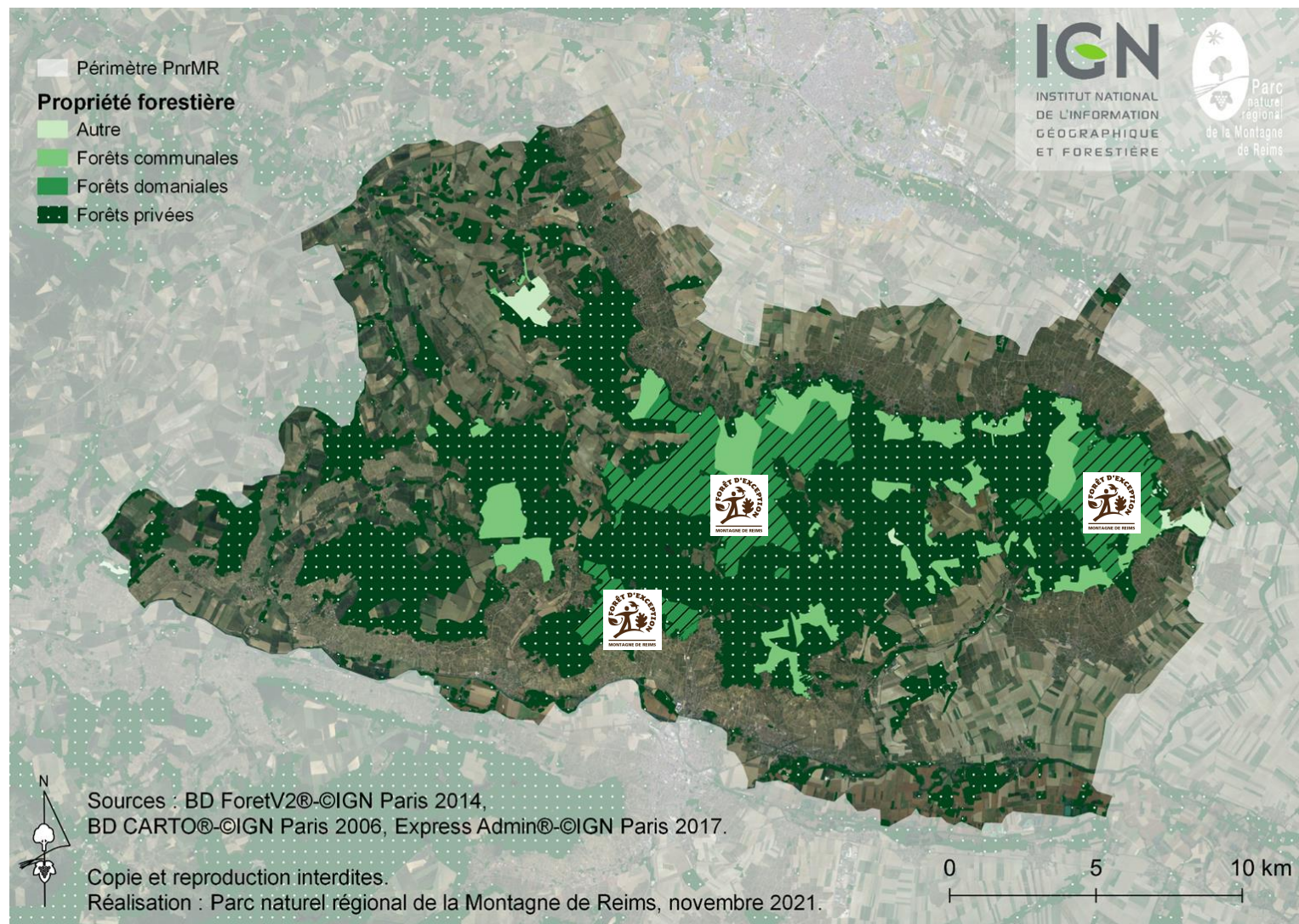
(other : 30% vineyards, 30% crops)

Among this forest massif :

- **3 state forests (15%)**
- **forests owned by municipalities (15%)**
- **private forests (70%)**



Forest massif in Montagne de Reims regional Park



State forests :



- Hautvillers state forest
- “Chêne à la Vierge” state forest
- Verzy state forest

Verzy State Forest : a curiosity and a fragile nature site

Highest density of “twisted” beech trees in the world (Faux de Verzy) : special trees at the heart of many legends. Scientific studies are still carried out to unravel the secret of these trees.

The site has been protected as a Biological Reserve status since 1981. Specific management measures are implemented.

Several ponds of environmental interest are also protected in Verzy state forest.

All these protective measures are necessary : **this forest attracts the highest density of visitors in Montagne de Reims massif.** (200 000 to 250 000 visitors a year).



Label “Forêt d’Exception®”

Since 2017, the 3 state forests located in Montagne de Reims regional Park are awarded with this label

It recognizes the efforts for a sustainable, multifunctional and concerted forest management



ONF (the National Forestry Office) and PNRMR (Montagne de Reims regional park) are both « co-pilots » of this label

A local “Forêt d’Exception® Montagne de Reims” Steering Committee gathers a wide range of stakeholders (research, sponsorship, local representatives, wood industry, tourism, environment, sports, residents, etc..). This partnership helps defining the label strategy and actions.

The National Forestry is an associated partner of MONA Project

« Forêt d'Exception[®] » : a national label



Sustainable and multifunctional forest management: what is it about ?

3 main roles of the forest :

- **Environmental** (nature preservation, biodiversity, carbon sink...)
- **Economic** (timber trade, and in our case : links between forest and vineyard)
- **Social** (“welcoming the public”: tourism & leisure – walks, paths, parkings...)

What are the main challenges ?

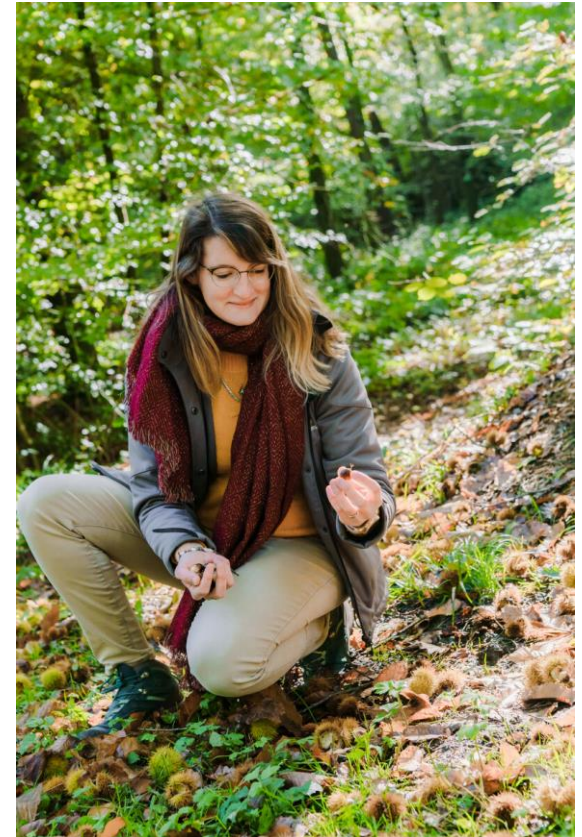
In Montagne de Reims, a few examples of challenges linked to the 3 functions of our forests :

Environment

- Climate Change (project “Life Biodiv’Est” currently running in PNRMR)
- Pressure on flora and fauna from human presence and activities

Economic

- Imbalance between the reproduction of certain species and the need for forest renewal
- The need to develop a stronger local wood industry

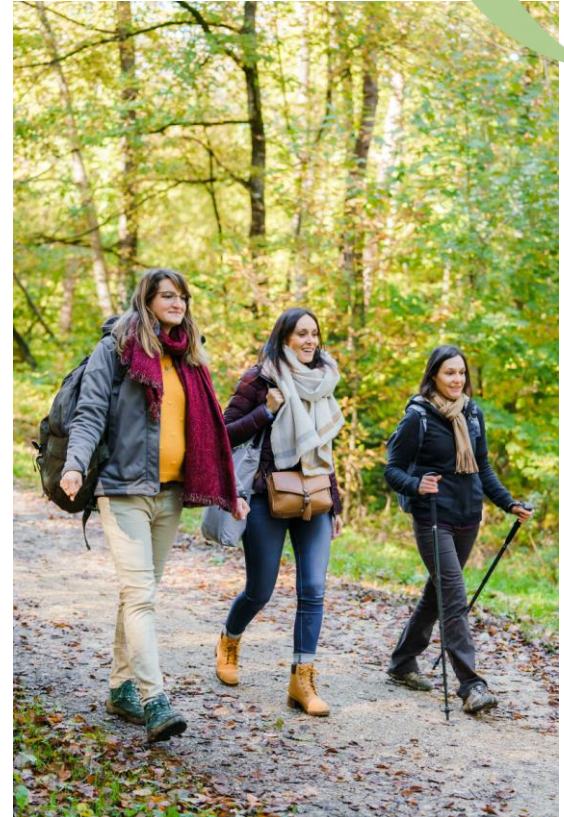


What are the main challenges ?

In Montagne de Reims, a few examples of challenges linked to the 3 functions of our forests :

Social (tourism & leisure)

- Allowing people to enjoy nature (with as little impact as possible) through planning / project management (creation of paths, facilities,...)
- Reconciling different activities and publics (for example: hikers and mountain bikers, hunters, wood workers...)
- Visitor flow management



A teal circle is centered on a yellow background. Two hands, drawn with simple blue outlines, are positioned on either side of the circle, with fingers pointing towards it as if holding it. Inside the teal circle, the text "A few projects already done in the past" is written in a bold, yellow, sans-serif font.

**A few projects
already done in
the past**

To encourage responsible visitor behaviour in the forests

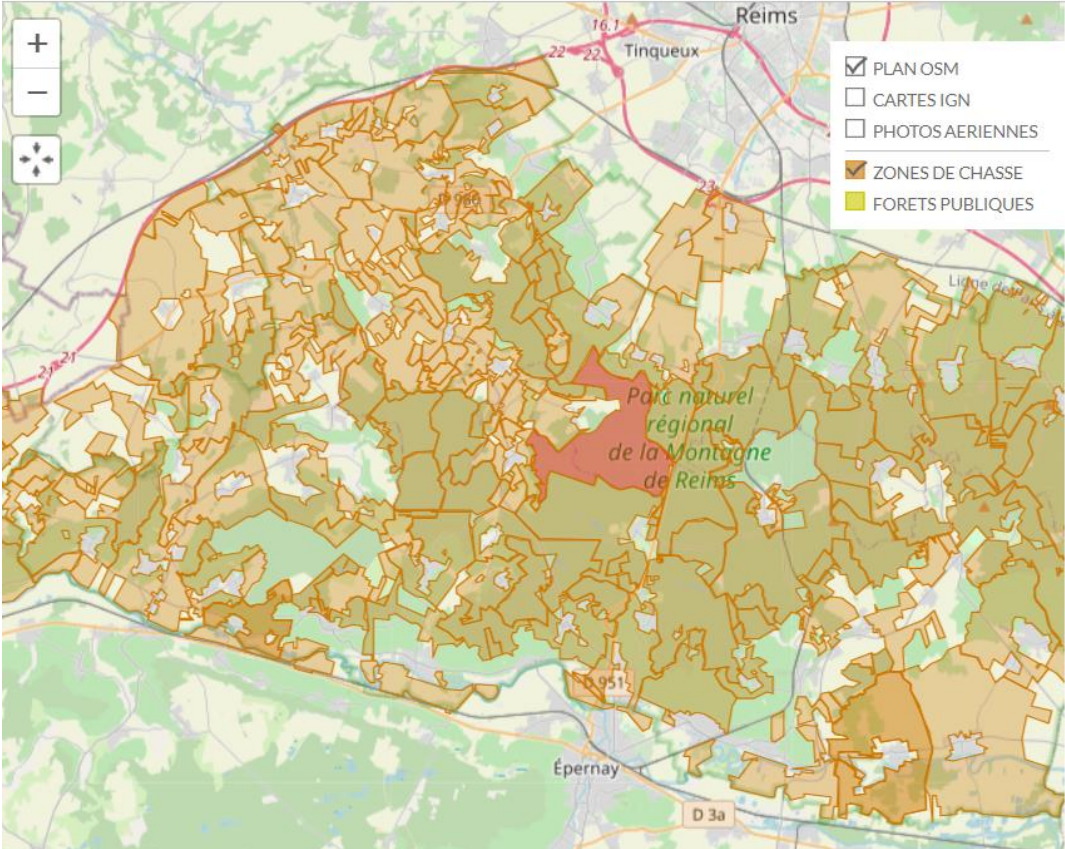
A website for hunting dates

CAR Montagne de Reims - Dates chasse en battue

Nous sommes le vendredi 20 septembre 2024

Afficher les infos pour : **Aujourd'hui** Demain Samedi prochain Dimanche prochain Choisir une date

| ou cliquer sur la carte pour voir toutes les dates d'un secteur



Reims
Tinqueux
Épernay
D 3a

Parc naturel régional de la Montagne de Reims

PLAN OSM
CARTES IGN
PHOTOS AERIENNES
ZONES DE CHASSE
FORETS PUBLIQUES

Dates de chasse en battue pour le secteur sélectionné :

- lundi 7 octobre 2024
- jeudi 17 octobre 2024
- jeudi 24 octobre 2024
- lundi 4 novembre 2024
- jeudi 14 novembre 2024
- lundi 25 novembre 2024
- jeudi 5 décembre 2024
- lundi 16 décembre 2024
- lundi 6 janvier 2025
- jeudi 16 janvier 2025
- lundi 27 janvier 2025
- jeudi 6 février 2025
- lundi 17 février 2025
- jeudi 27 février 2025

Since 2012, the Park and the regional hunting federation share a website where the public can find the location and dates of hunts.

This information helps to avoid conflicts between walkers and hunters.

The hunting societies provide their hunting dates on a voluntary basis.

Organisation of an event to promote outdoor activities and sustainable mobilities towards nature : “La Grande Traversée”

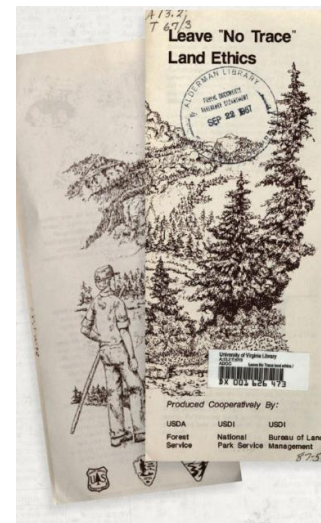
La Grande Traversée

DU PARC NATUREL RÉGIONAL
DE LA MONTAGNE DE REIMS
RANDO X TRAIN



Declination of the « Leave no trace » philosophy

Inspiration : « LEAVE NO TRACE » (Int.org)



1970s-1980s

A "no trace" program is formed for wilderness, backcountry travel and camping. The U.S. Forest Service, National Park Service and Bureau of Land Management cooperate distribute a pamphlet entitles "Leave No Trace Land Ethics."

Archive document from Ing.org

Se préparer et prévoir

Prendre connaissance des sentiers balisés, respecter la propriété privée, consulter les dates de chasse...

Utiliser les espaces aménagés et adaptés

Emprunter les itinéraires balisés, ne pas faire de hors-piste, pique-niquer sur les lieux prévus à cet effet

Zéro déchet sur site

Laisser intact l'environnement

Laisser à leur place les éléments naturels (fleurs et plantes, roches, bois morts...).

Respecter la vie sauvage

Privilégier les activités en journée, tenir les chiens en laisse, contourner les ornières...

Feux interdits

En forêt et à moins de 300 mètres

Respecter les autres usagers



Communicate good practices for sports events organizers

- Use non permanent signs
- Take off signing and any trace of the event 48H after the event maximum
- No pollution on site
- Force participants to get round ruts
- New rules for night events

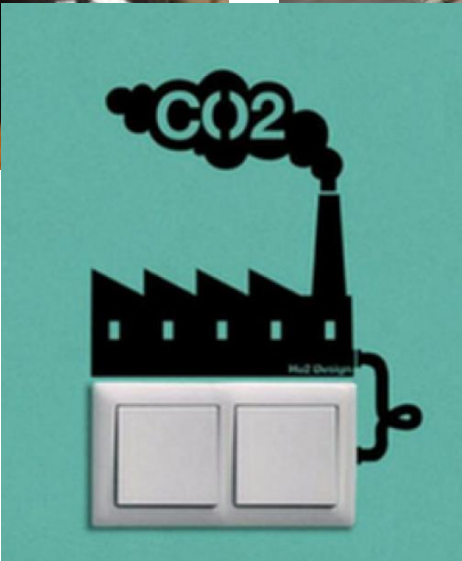


A teal circle is centered on a yellow background. Two hands, drawn with blue outlines, are positioned on either side of the circle, appearing to hold it. Inside the teal circle, the text "And now, what ?" is written in a bold, yellow, sans-serif font.

And now, what ?

Thanks to MONA Project...

Nudging : from this...



...to adapted nudging solutions (under development) to enhance responsible practice of outdoor activities in nature !

Thank you !

ANNE DESVERONNIÈRES

**VICE-PRESIDENT
OF MONTAGNE DE REIMS NATURE PARK (PNRMR)**

**PRESIDENT
OF THE FORÊT D'EXCEPTION® LOCAL STEERING
COMMITTEE**



Interreg



Co-funded by
the European Union

North-West Europe

MONA



To know more about MONA Project in Montagne de Reims regional nature Park:

**Modal shift / Sustainable mobilities – Emmanuelle Déon
e.deon@parc-montagnedereims.fr (MONA - Pilot A)**

**Nudging / Responsible practice of outdoor sports – Blaise Paillard
b.paillard@parc-montagnedereims.fr (MONA – Pilot B)**