

Governance and collaboration to ensure high impact sustainability in and during major infrastructure projects.

POLIS Conference 2021 Markus Aarflot

Agenda

- Case project: The West Link (Västlänken)
- Challenges
- Collaborations structure
- Successful examples
- Regulation, cooperation or collaboration?

The West Link



Cost: 2.000.000.000 EUR (2009)

Length: 8 km (6 km in tunnel)

Purpose: Passing stations instead of end stations. Increased capacity and new public transport relations.

Planned opening: 2026

Double tracked tunnel with parallel service and rescue tunnel. Four platforms at each of the stations

Unprecedented city development



Images: Trafikverket (Swedish Transport Administration), Kanozi



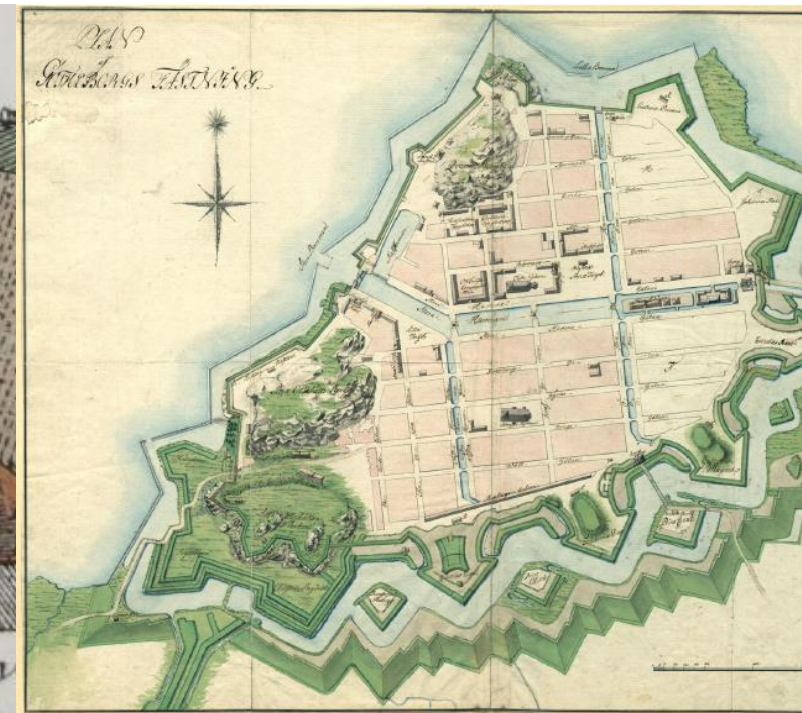
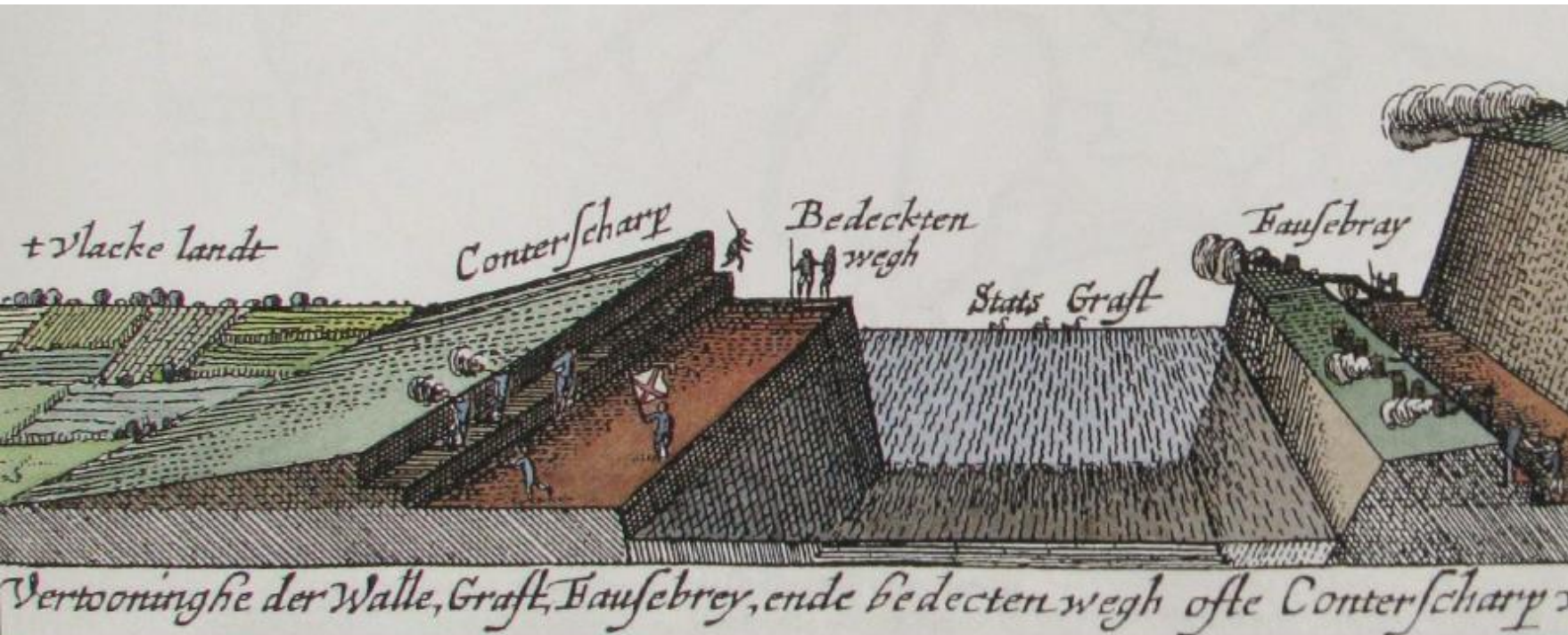
Image: Trafikverket (Swedish Transport Administration), JSA Architecture Ltd, ABAKO Arkitektkontor AB

Challenges

City of Gothenburg has turned 400 years, 400 years of city development and expansion

Main challenges:

- Preservation of ecological and historical values
- New city development
- Existing city life and transportation



Challenges

City of Gothenburg has turned 400 years, 400 years of city development and expansion

Main challenges:

- Preservation of ecological and historical values
- Existing city life and transportation
- New city development





Image: Gottlieb Paludan Architects

Collaboration partners



Regional Public Transport
Authority and property
development

Constructing organisation and
infrastructure owner

Surrounding infrastructure,
preservation and city
development



GOTHIA TOWERS



Collaboration structure



Strategic decisions with senior management represented. Establishes general direction of action.

Management group handling major questions in collaboration and formalizing agreements.

Specialized domain workgroups with all partners represented. Examples being parks and ecology, parking, traffic management.

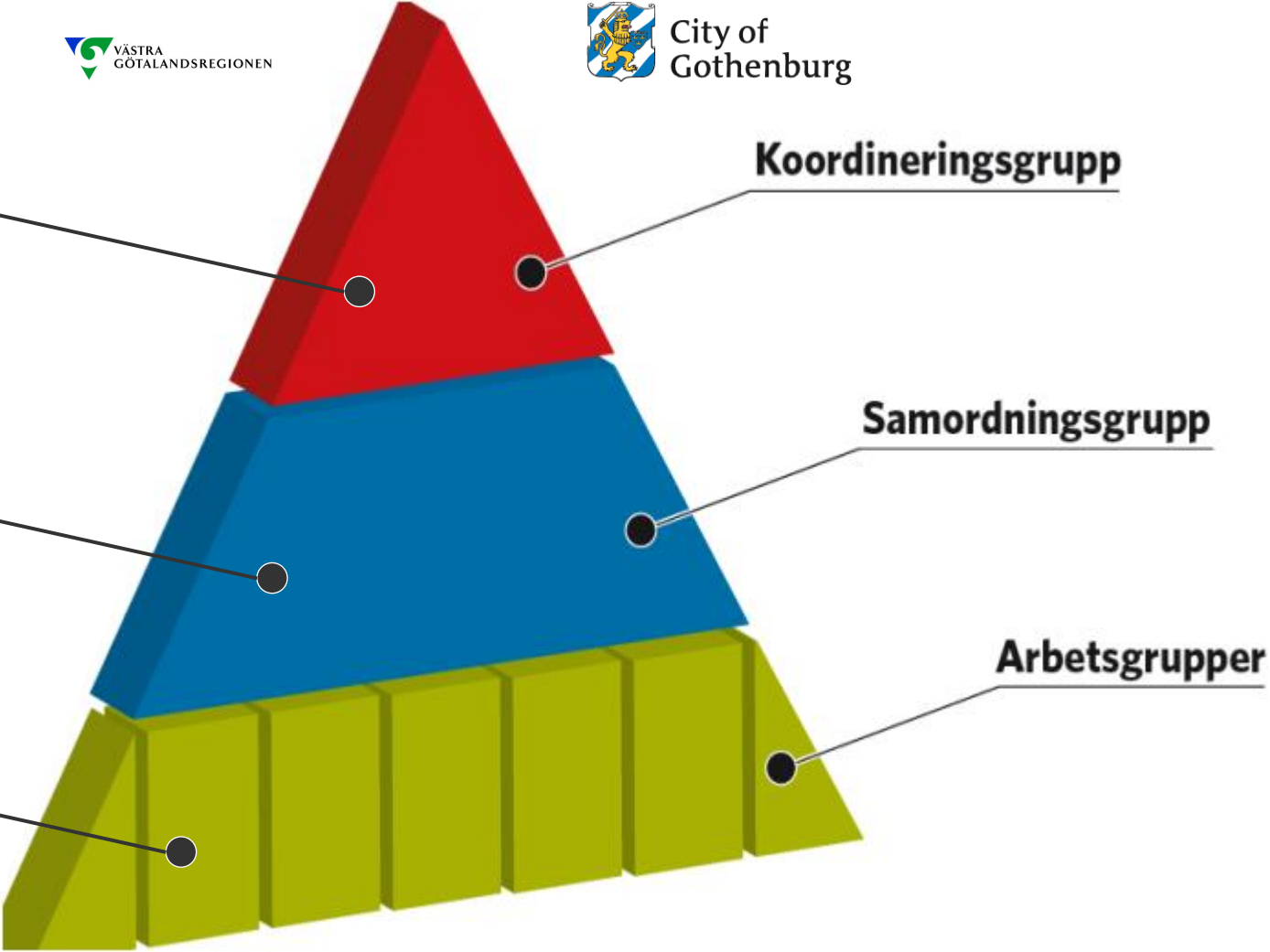




Image: Jernhusen

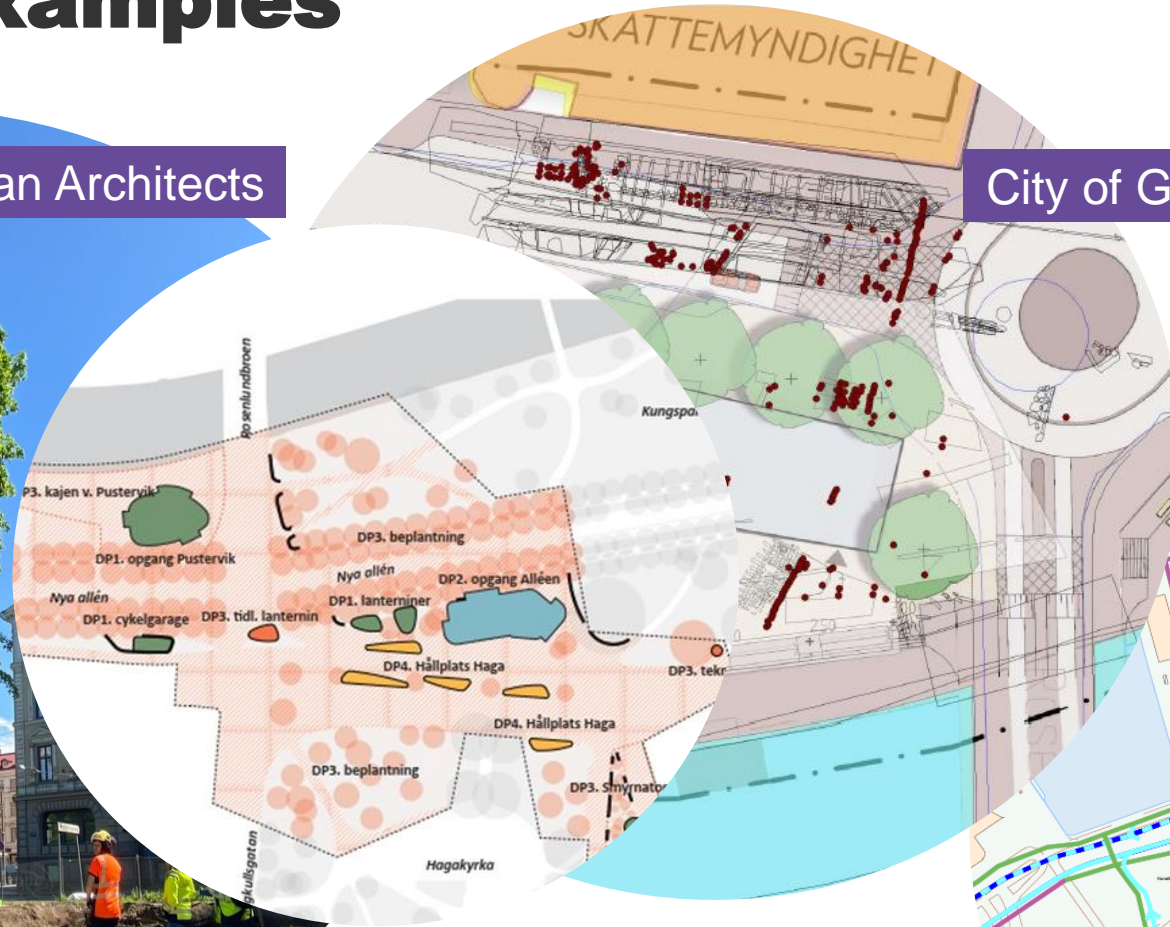
Successful examples

Gottlieb Paludan Architects

City of Gothenburg



Trädflytt



Swedish Transport Administration

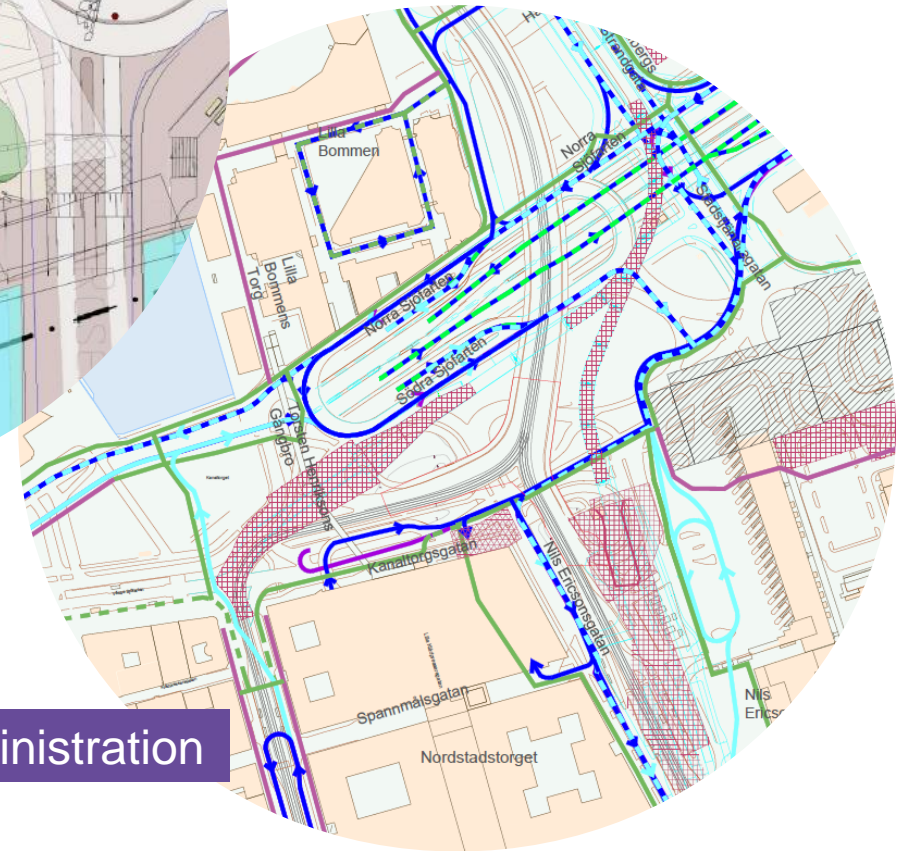




Image: City of Gothenburg

Regulation, cooperation or collaboration?

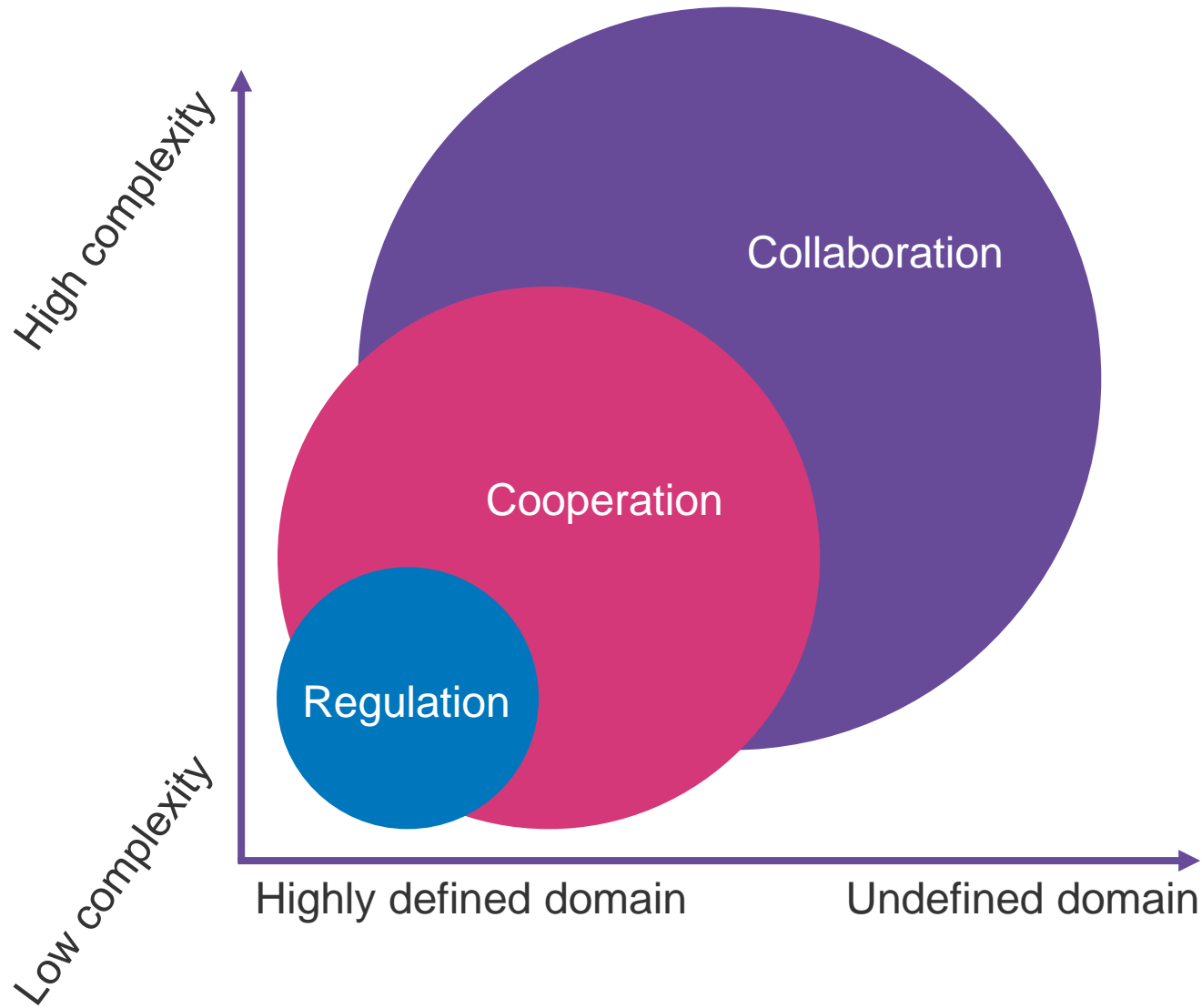




Image: Jernhusen

Contact

Markus Aarflot

markus.aarflot@trafikkontoret.goteborg.se

Urban Transport Administration of the City of Gothenburg