

# CONNECTING SOUTHAMPTON

BETTER TRANSPORT  
FOR A SUSTAINABLE CITY

Better Transport for a  
Sustainable City  
POLIS Conference 2019

# Introduction

Southampton Today

Challenges

Transport Policy Response

Investment and Activities

What's Next

# Transport in Southampton

**1.96M**

passengers used Southampton Airport in 2016 to 40 destinations



**45**

miles of dedicated cycle routes



**370**  
miles of highway

**683**

miles of footways

**32**

miles of public rights of way

**17.7%**  
journeys to work are on foot

**53,597**

people both live and work in Southampton



**10.1%**  
of residents travel by bus to work



**69.2%**  
of all trips to work are by car



**25%**  
Journeys to work by bike rose by a quarter 2001–2011

**41,302**

people who live in the city commute out to work

**41,977**

people commute into the city to work from outside

## SOUTHAMPTON TODAY

**112**

people were killed or seriously injured on our roads in 2017



**6.3M**

JOURNEYS began or ended at Southampton Central station

**21.2M**

journeys were made on buses, up 11% since 2011



**7.2M**

JOURNEYS went through the city's 8 railway stations, 9% more than in 2011



**70.4%**

of households in the city own at least one car/almost a **third** of households in the city **do not own a car**



**1.7M**

cruise visitors passed through the Port of Southampton in 2016

**3RD**

LARGEST PORT

in the UK with **36M** tonnes of trade going through the port worth **£71B**



**3.5M**

travelled through Southampton on Red Funnel to Isle of Wight and across to Hythe



**51.8km<sup>2</sup>**

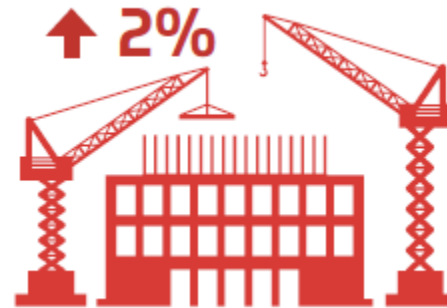
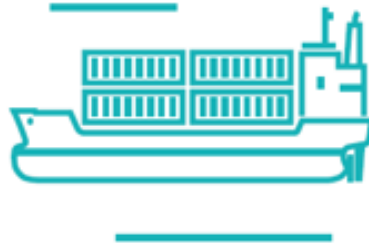
Size of city



**254,275**

Population of Southampton

# Challenges



# A Brief History of UK Transport Policy

*Number of motor vehicles*

## 1. Pro-car - 'Predict & provide'



Focus = road vehicle movement

1950-1995

## 2. Manage Demand



Focus = Reduce need to travel, manage demand

1995-2015

## 3. Greater restraint, reallocate roadspace



Focus = Vibrant places for people, place-making

2015-2040 &  
beyond?

Time

# A New Transport Strategy – Connected Southampton 2040



## Connected Southampton



Joint South  
Hampshire Strategy

Southampton Issues  
& Options  
The Evidence Base

Transport  
Strategy 2040  
Vision and Approach



Implementation &  
Supporting Plans  
Delivery & Monitoring



# Connected Southampton 2040



# How Are We Doing It?



# Cycling



# Cycling



**Ride the**  
Southampton Cycle Network **Route 1**

Totton — Redbridge — Millbrook — City Centre

**S** SAVE TIME    **C** CUT COSTS    **N** NO TRAFFIC    **I**

[myjourneysouthampton.com/SCN1](http://myjourneysouthampton.com/SCN1)



# Let's Ride Southampton



# Public Transport

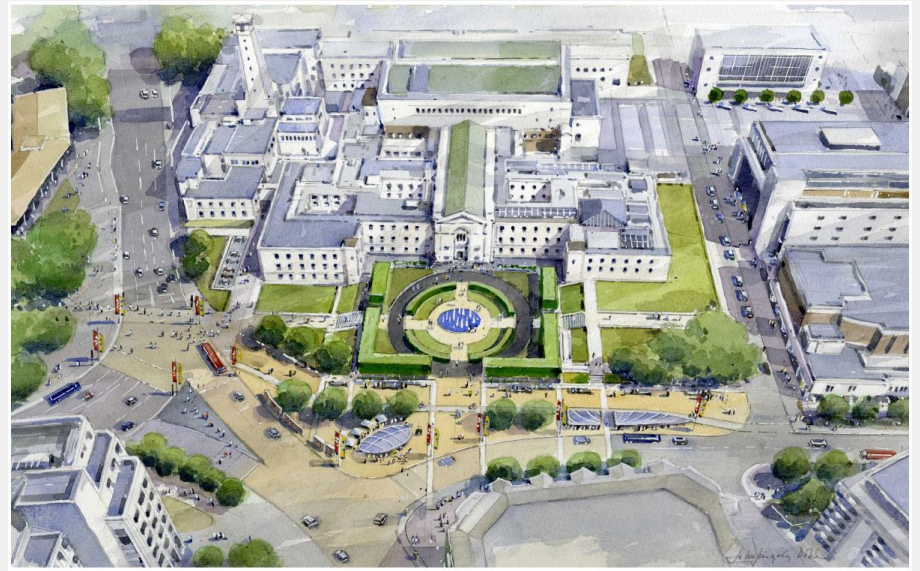


# Reliable Journeys



PHOTO 01 - NORTHAM ROAD (SOUTHBOUND)

# City Centre Transformation



# Local Journey Transformation



# Local Journey Transformation

Active Travel Zones

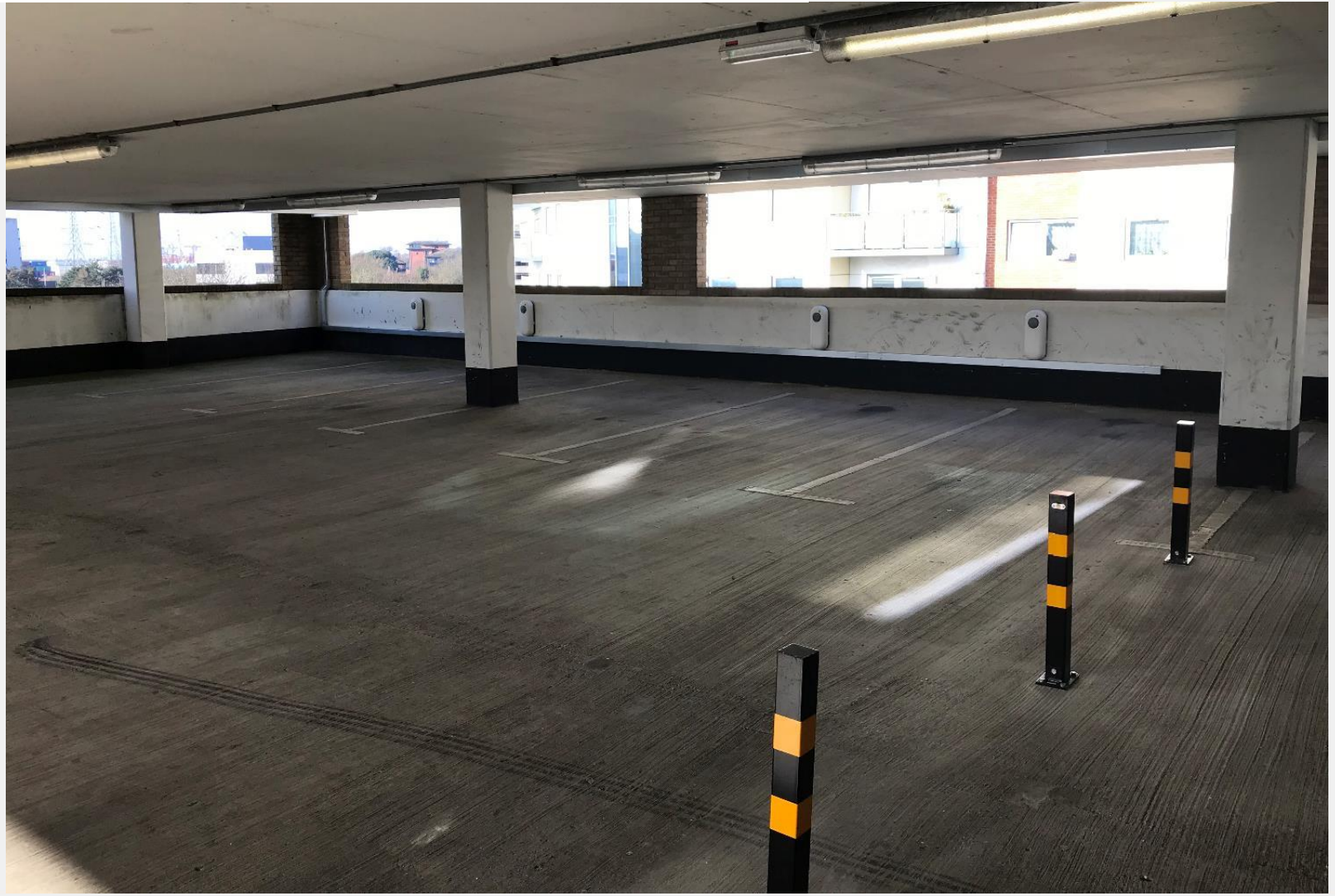




# Logistics



# Electric Vehicle Charging



# Transforming Cities Fund

- £1.8bn fund from Department for Transport to improve sustainable and active travel connections in England's biggest City Regions to boost productivity and reduce emissions
- Joint bid between Southampton and Hampshire
- £5.7m of funding for Tranche 1 schemes during 2019

# Southampton City Region TCF

TCF investment will do this by:

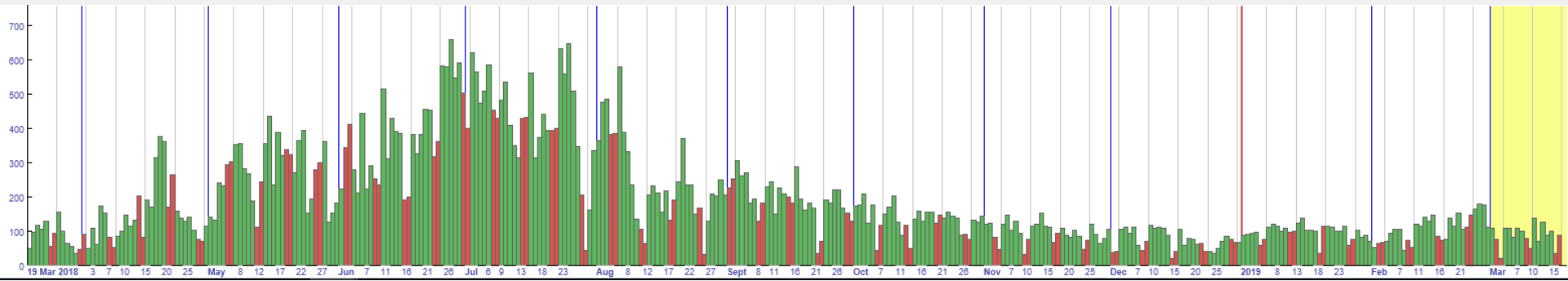
- **Rapid Bus Corridors**
- Delivering **Park & Ride** for Southampton
- Become a true cycling City Region with new **Cycle Freeways** and routes
- Improving the **gateways** to the City Centre and at the Airport
- **Transforming** the City Centre to **become liveable** with more space for people and less for cars – including reducing parking
- Implementing **Connected Intelligent Traffic Systems** to support autonomy and buses
- New **Local Mobility Hubs** and **Active Travel Zones**



# Monitoring



- BikeLife – developing a transparent way of assessing how SCC is performing on cycling – perceptions and actual data, progress and people’s attitudes
- Local Transport Plan Implementation Plans
- Public Transport and Traffic Data
- Outcomes from events at schools, businesses and the larger scale activities
- Counts – before and after a scheme opens and a series of automatic counters to give us real time information



# Thank You

[transport.southampton.gov.uk](https://transport.southampton.gov.uk)

[myjourneysouthampton.com](https://myjourneysouthampton.com)