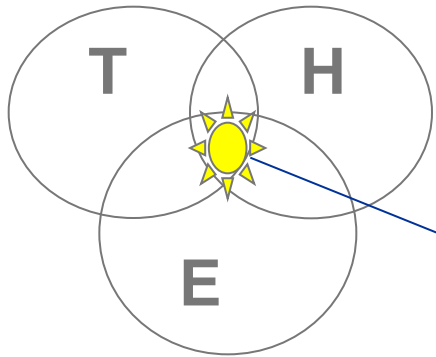


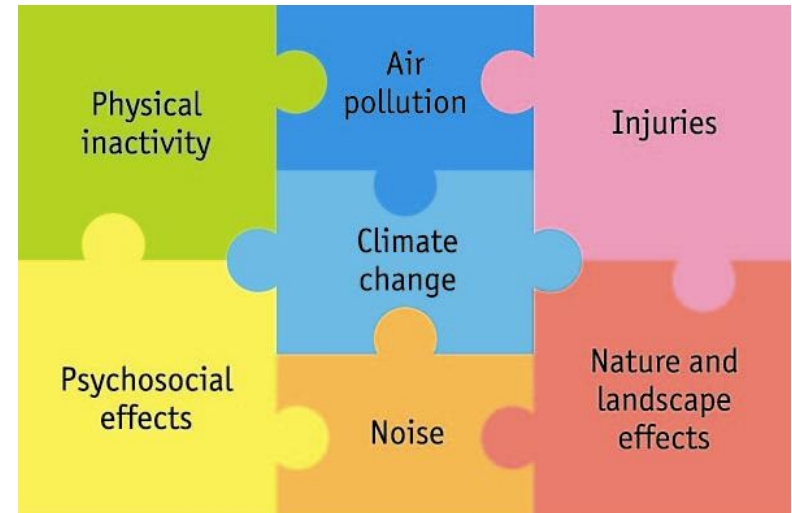
Making THE Link: The Transport, Health and Environment Pan-European Programme (THE PEP)

Polis working group, Brussels, 30 October 2012

Challenges in Transport, Health and Environment



- Demand for mobility
- Shrinking space
- Wish to live well and longer



- **Transport impact on health & environment**
- **Capacity of the health sector to mend**

THE PEP from seed to plant

Transport Sector



1999 charter THE

2002 THE PEP

THE PEP priorities

- **Integration of E&H aspects in transport policies**
- **Transport management towards sustainable mobility**
- **Urban transport**
- **Transition countries and sensitive areas**



What is THE PEP?

- **Tri-partite policy framework for a larger Europe**
 - integration of environment and health concerns into transport policy
 - Transport, Health, Environment on equal footing
- **Integrated and holistic approach**
 - Air pollution, climate change, noise, injuries, nature and landscape effects, physical inactivity, psychosocial effects, economy
- **Governance of THE PEP process:**
 - Steering Committee (annual): 3 sectors represented
 - THE PEP Bureau (biannual): guides the process
 - High-level Meeting (every 5 year): maps the future

The Amsterdam Declaration Goals for 2009-2014

- Sustainable *economic development*
- Sustainable and efficient *transport systems*
- Reducing transport related *emissions*
- Safe and healthy *modes of transport*



Mechanisms of THE PEP

- Relay race
- National Transport, Health and Environment Action Plans
- Partnerships



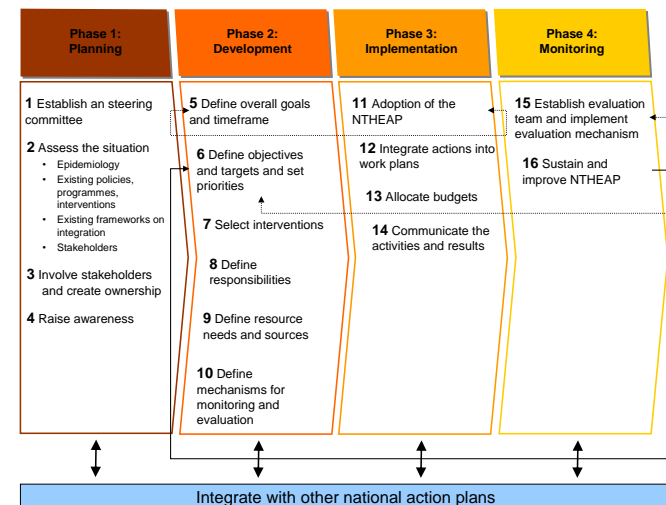
The Relay Race – Passing the baton

- **Bringing together all 3 sectors through a series of workshops on**
 - Integrated policy-making for sustainable urban transport
 - Safe and healthy urban walking and cycling
- **Focus on local action**
- **Sharing international experience**
- **Following up – reporting when passing the baton**



THE national action plans

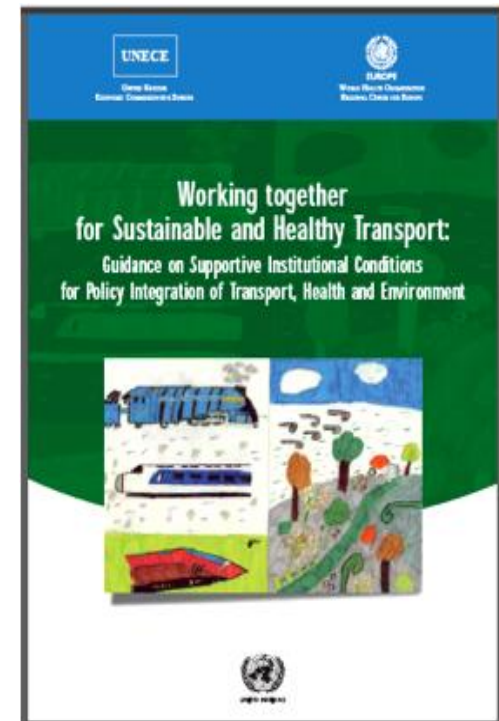
- Guidance for integrated action plans on THE
 - practical implementation of policies on sustainable and healthy transport
 - addressing transport-related health and environmental impacts
 - increase transport efficiency
 - involve all relevant sectors
 - Guidance to be published spring 2013



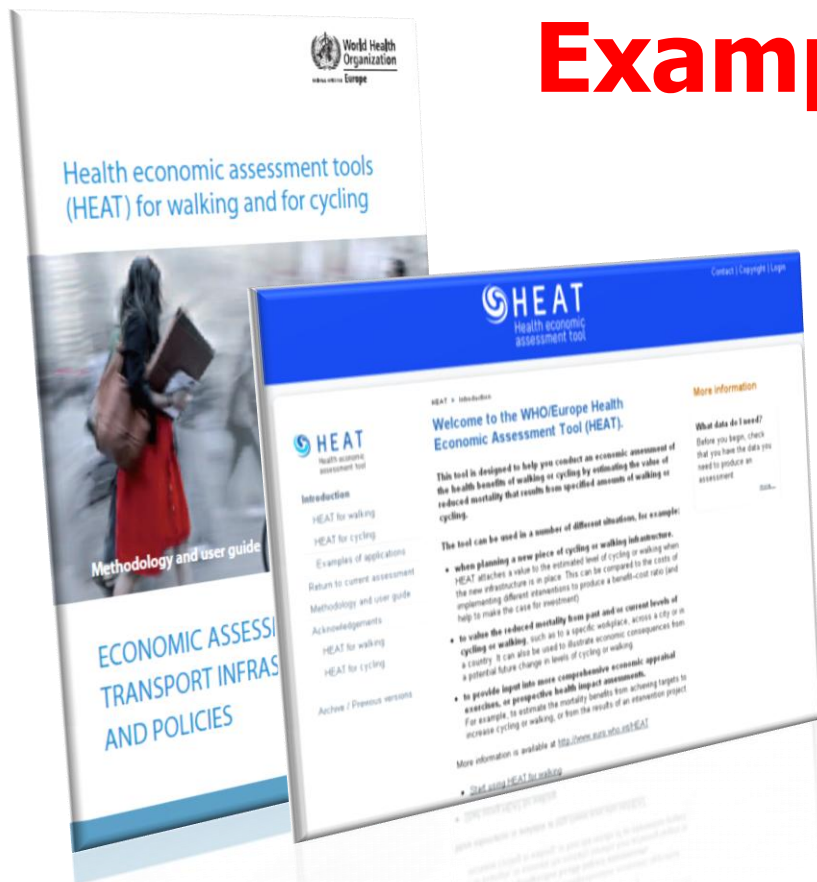


The Partnerships

- Centered around specific topics
- Provide an effective mechanism to support the implementation of the workplan and of the work at the national level
- Strengthen ownership among partners
- Provide a more sustainable basis for the implementation of THE PEP workplan



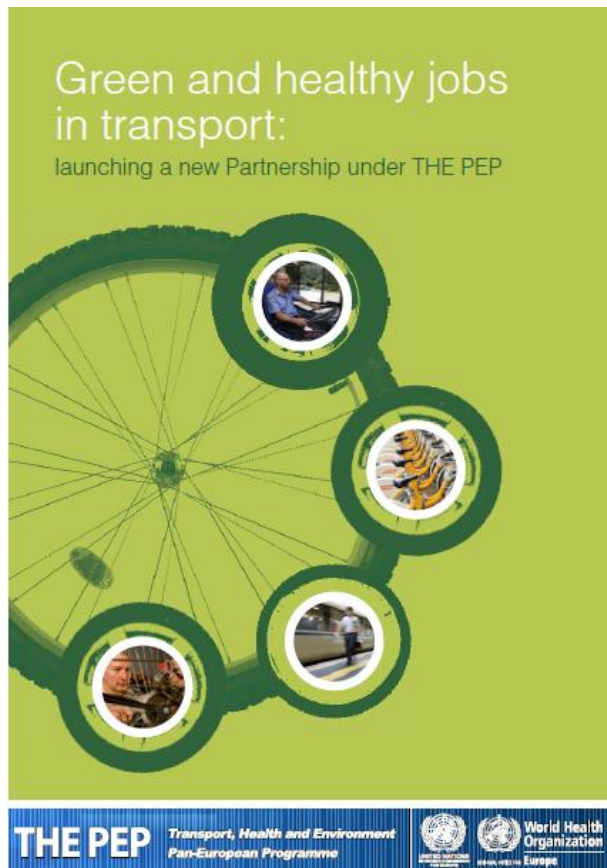
Example: HEAT



- Health Economic Assessment Tool for walking and cycling
- Helps integrate health into transport planning
- Collaborative project

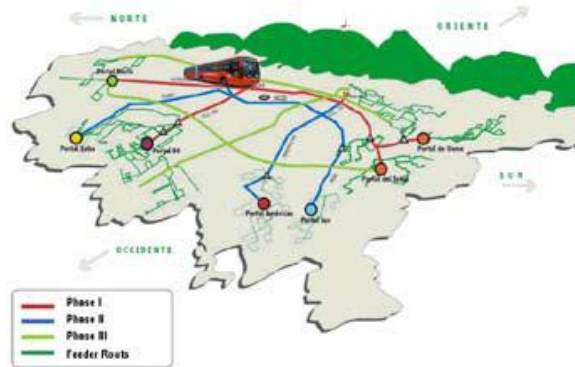
<http://www.euro.who.int/HEAT>

Example: Green and healthy jobs in transport



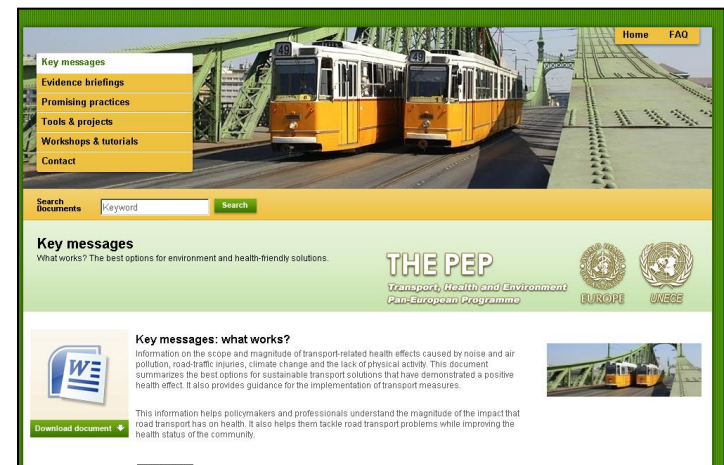
- Supporting active travel
- Improving Public Transport and increase attractiveness
- Technology to reduce emissions per mode
- Encouraging behavior change
- Mobility management
- Freight (e.g. cargo bikes)
- Reducing car use
- Reducing travel demand
- Tourism

Show cases for creating local green and healthy transport jobs: a largely unexplored opportunity



Example: The Clearing House and Toolbox

- Web-based portals
- Exchange of knowledge and good practice
- Integrated policy approach
- Tools and methods to implement THE PEP
 - evidence briefings
 - promising practices
 - workshops and tutorials



Invitation

- **THE PEP 2012 Symposium on green and health-friendly mobility for sustainable urban life**
- **14 November 2012, WHO Headquarters, Geneva, 15:00-18:00**

And ... 10th anniversary of THE PEP!

THE PEP

Transport, Health
and Environment
Pan-European Programme



Thank you

www.thepep.org