

SIMON

ASSISTED MOBILITY
FOR OLDER AND IMPAIRED USERS

Mobility for impaired users: From parking to multimodal transport in cities

Marian Marsh, Transport Planner
Reading Borough Council





The problem



- **Forge and misuse of the European Disabled Badge:** *Fake badges, incorrect parking in reserved spaces, misuse of genuine badges...*



- **Lack of information:**
 - For public transport: routes, accessible means, travel planning, real-time information,...
 - For private transport: location and availability of parking spaces, access to restricted areas,...



- **Lack of incorporation of ICT solutions in the provision of accessibility and mobility services**





The project

European funded project

WHAT?

To ease urban mobility and parking of disabled and elderly:

- Access to public parking areas
- multimodal transport



SIMON

ASSISTED MOBILITY
FOR OLDER AND IMPAIRED USERS

HOW?

Adoption of access-rights management solutions and use of specific navigation information

- Modernisation of European Parking Badge for the Disabled
- Security tokens
- Mobile apps

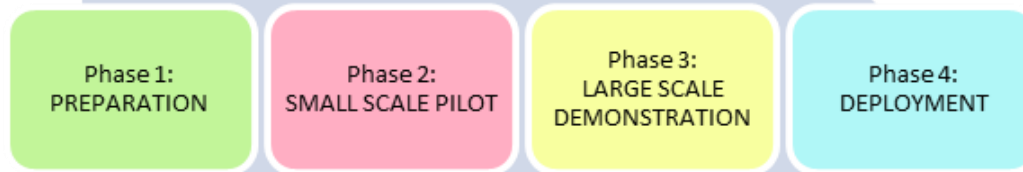




The project

WHEN

- Started January 2014
- First: Requirements, Specifications and Integration
- Following: Deployment and adaptation to infrastructures
- 2016: Pilot phase and Roadmap for Deployment



WHERE

- 4 large scale pilots in Madrid, Lisbon, Parma and Reading
- Demonstration project: **Test and validation in real life conditions**

Mobility for impaired users: From parking to multimodal transport in cities

etra I+D



COUNTRIES





SIMON Services and applications

SIMON SAYS	• User authentication and validation
SIMON ANSWERS	• Navigation, routing and information
SIMON OPENS	• Access to restricted urban areas
SIMON BOOKS	• Identification of free/occupied parking places

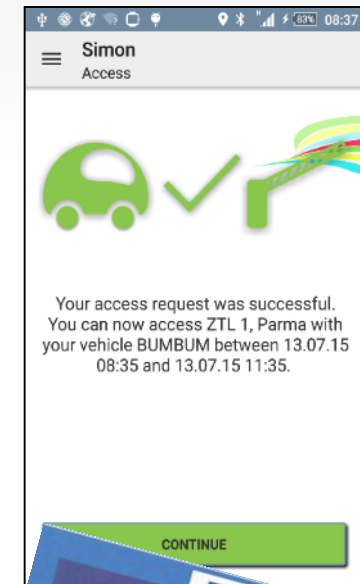
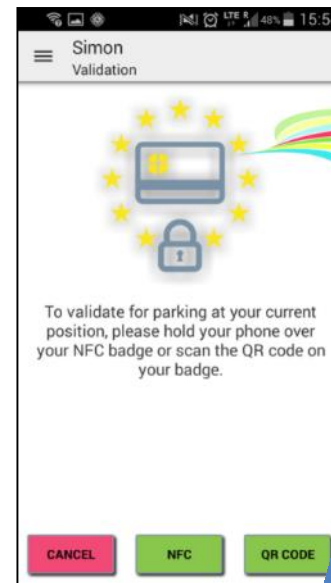
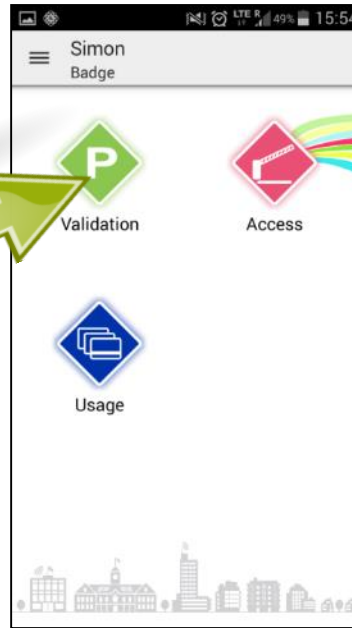
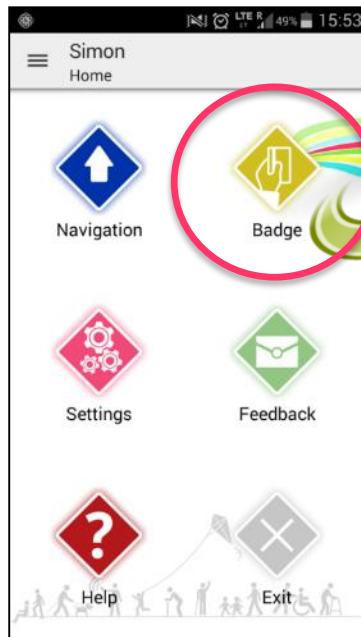
SIMON
Services

SIMON LEADS	• Citizen app: SIMON Mobile
SIMON CONTROLS	• Controllers app
SIMON BACKOFFICE	• Authority Operator Tool

SIMON
Applications



For citizens SIMON Mobile





SIMON APPLICATIONS AND SERVICES

SIMON Mobile

Navigation

Badge

Settings

Feedback

Help

Exit

Explore

Route

Timetable

Favorites

Outdoor and indoor navigation

Simon Route

Walking Driving Transit

Access to Metro 'Aeroporto' (Bairro São João de Brito) Portugal, Lisboa

Rua Marquês de Sá da Bandeira, 112 (Avenidas Novas) Portugal, Lisboa

Starting at 17:35 30.07.15

Options COMPUTE

17:35 8.26km

17:42

0:06h

MAP TEXT NAVIGATE

17:35 0.05km

17:49 8.26km

Simon Route

Walking Driving Transit

Route limit 3 routes

Wheelchair access

Nearby parking

Walking speed Slow

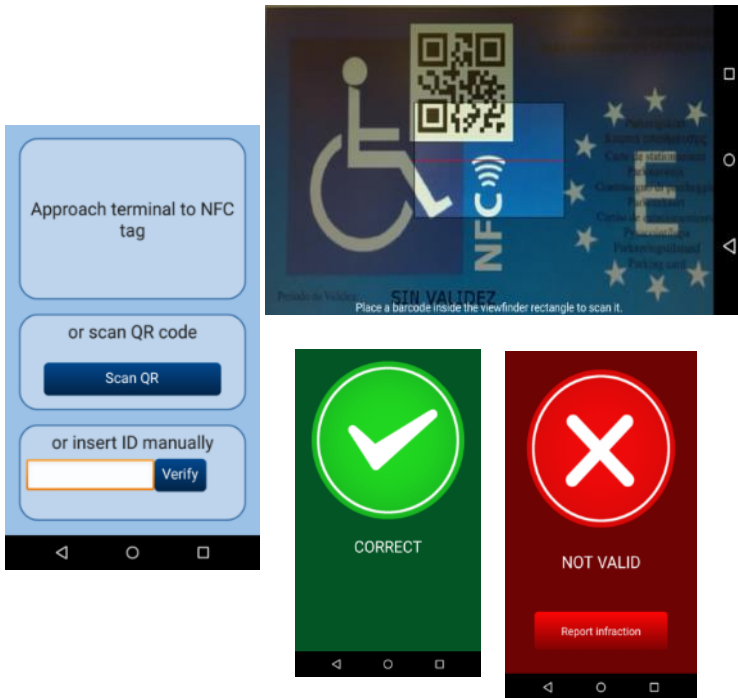
Transfer time 5 minutes

Done

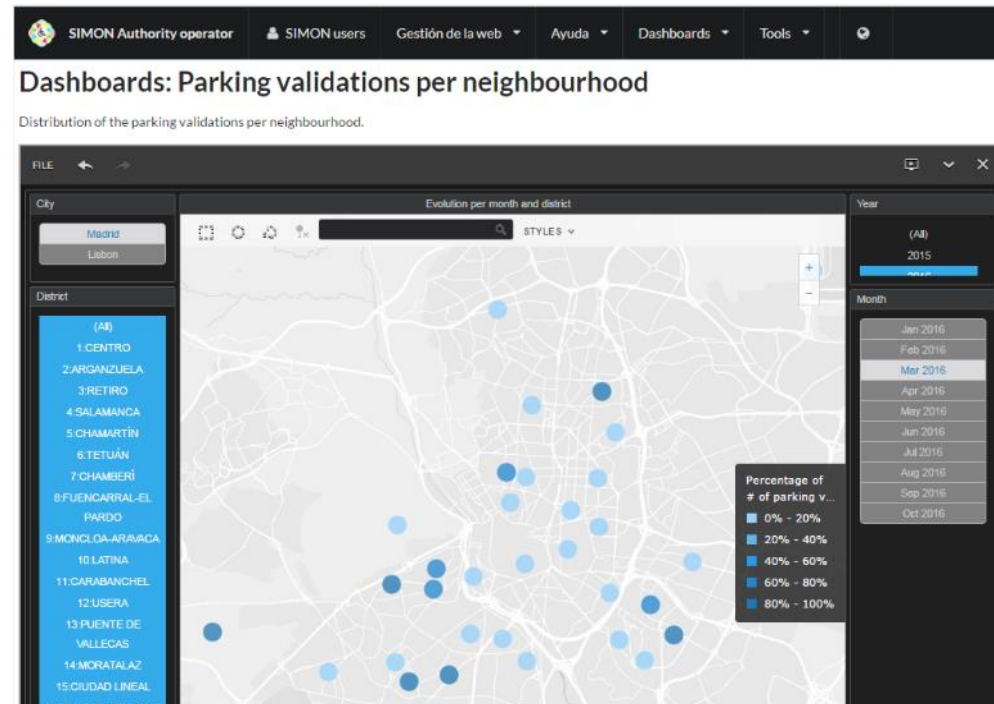


For Public Authorities

SIMON Controls

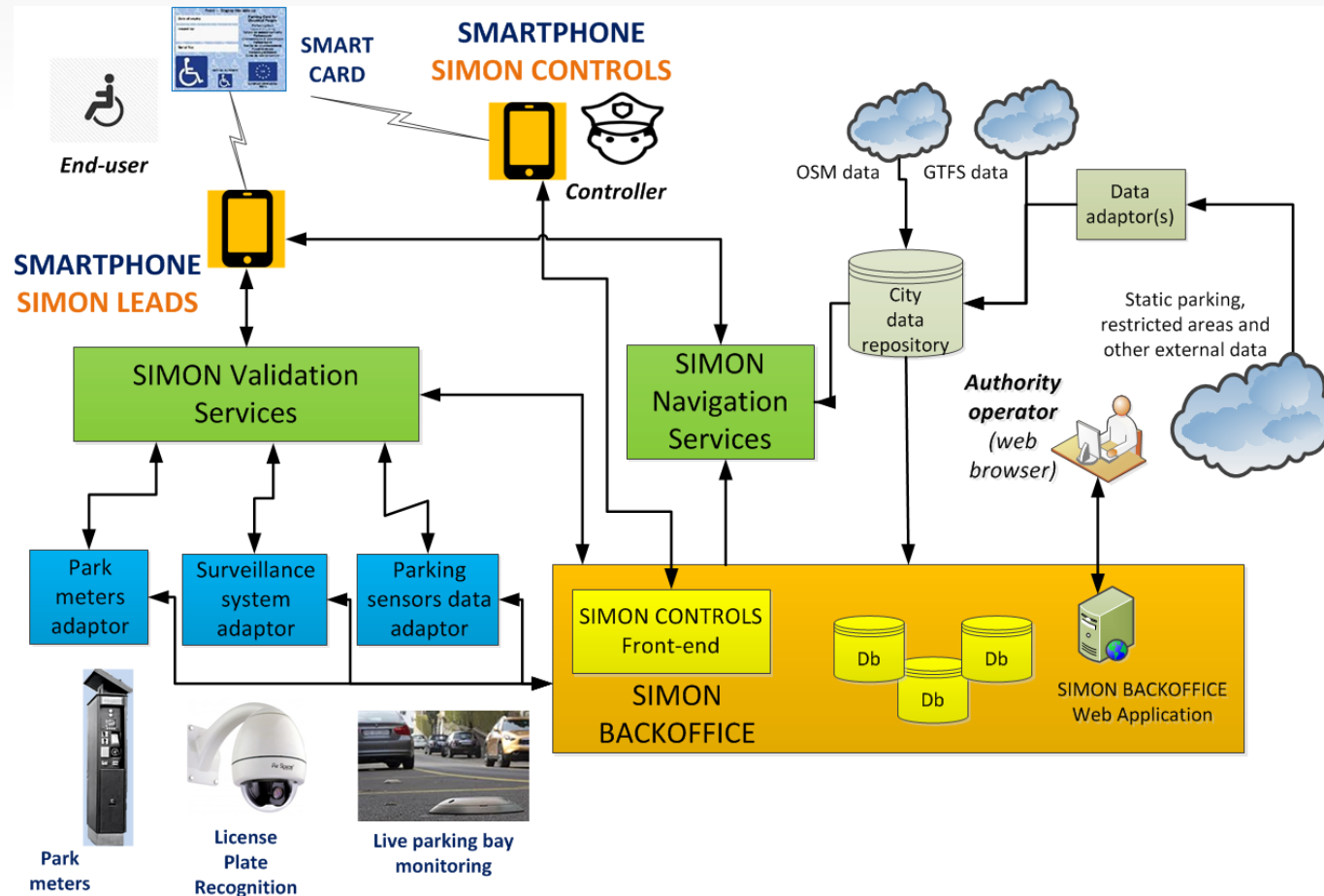


SIMON Authority Operator Tool





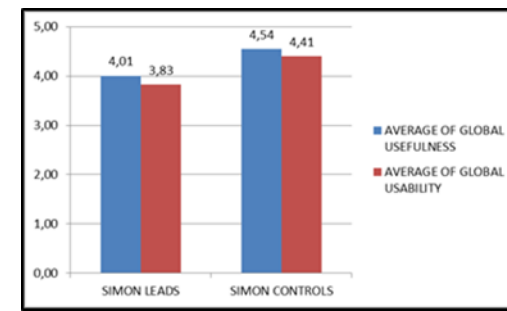
The process of adapting city infrastructure





Results: large-scale pilot in cities

- Pilot cities are deploying new ICT-enhanced parking badges for mobility impaired people
 - About 2000 at this moment
- Parking controllers and enforcement officers using SIMON CONTROLS app to check validation of parking
- Usability and design of app evaluated by End User Associations
- User experience being evaluated: questionnaires, reporting of incidences
- Statistics of use in Authority Operator Tool: validations performance, NFC use vs QR code use





Results

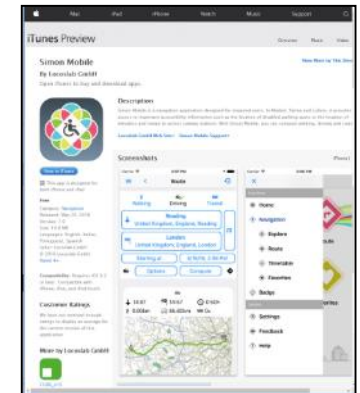
1

Know more...

SIMON for: EUROPE



3



2

Know more...

SIMON for: MUNICIPALITIES, TRANSPORT OPERATORS AND PUBLIC AUTHORITIES

Guidelines for deployment of SIMON system



Thanks for your attention



More information:

<http://simon-project.eu>

You can find us on

Facebook:



<https://www.facebook.com/SIMONSolution>

Twitter:



<https://twitter.com/SIMONEUProject>

LinkedIn:



<https://www.linkedin.com/groups/SIMON-Project-8191101>